



12 Dale Crescent

Hathersage, Hope Valley, S32 1AP

Offers In The Region Of

£115,000



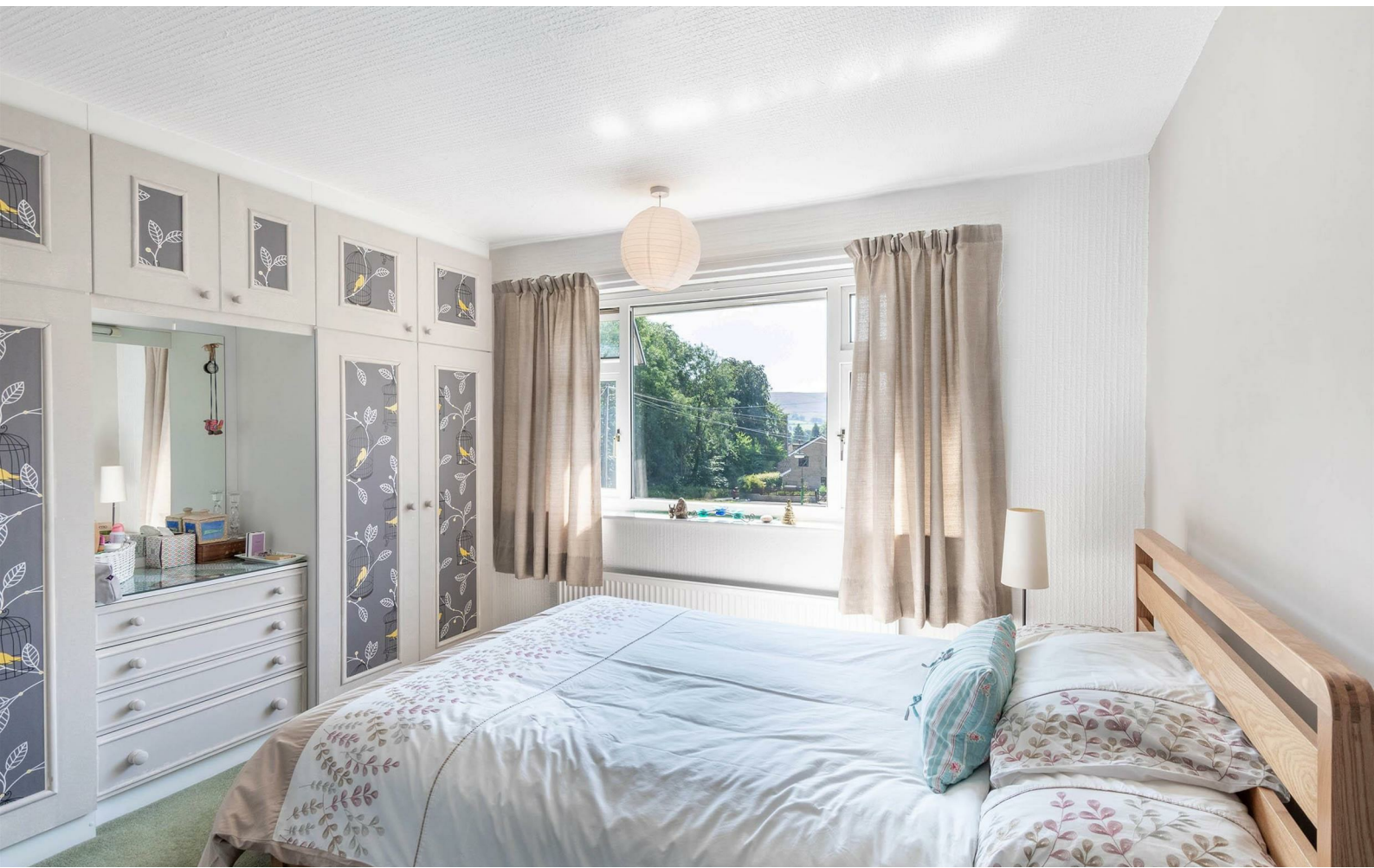
12 Dale Crescent



Description

A three bedroomed semi-detached family home, enviably positioned in the village of Hathersage, benefitting from driveway parking, garage and stunning rear garden. Occupying a peaceful location set back from the road, this beautifully presented property has accommodation arranged over two floors with potential to extend, subject to planning permission.

- Three bedroom semi-detached family home in the village of Hathersage
- Dining room with garden aspect
- Utility area / rear porch with cloakroom/WC
- Lovely views across the village
- Stunning rear garden
- Sitting room with fireplace and gas fired stove
- Well-appointed dining kitchen
- Three bedrooms including generous master bedroom
- Family bathroom
- Potential to extend, subject to planning permission





Floor Plan



Area Map



Viewing

Please contact our ELR Hathersage Office on 01433 651888 if you wish to arrange a viewing appointment for this property or require further information.

These particulars, whilst believed to be accurate are set out as a general outline only for guidance and do not constitute any part of an offer or contract. Intending purchasers should not rely on them as statements of representation of fact, but must satisfy themselves by inspection or otherwise as to their accuracy. No person in this firms employment has the authority to make or give any representation or warranty in respect of the property.

Eadon Lockwood and Riddle Main Road, Hathersage, Hope Valley, S32 1BB
Tel: 01433 651888 Email: peakdistrict@elr.co.uk www.elr.co.uk

Energy Efficiency Graph

